

## Bruges



The '**Bruges**' is made of 3mm CorTen steel.

It's a modern woodstorage which consists of 3 "houses" with a small intersection piece. Delivered as a DIY kit (flatpack). The set contains 13 steelplates, 18 strips, 9 profiles and a set of fasteners and manual. You can build it with 1 person (1 hour) and you can decide the order of the houses. Standard delivered with 3 modules and intersection. Also possible to order extra modules so that you can make it longer.

*'Bruges' is therefore more than just a functional solution for storing firewood.*

*It is a stylish, durable and well thought-out outdoor furniture that can be given a prominent and visible place in your garden!*



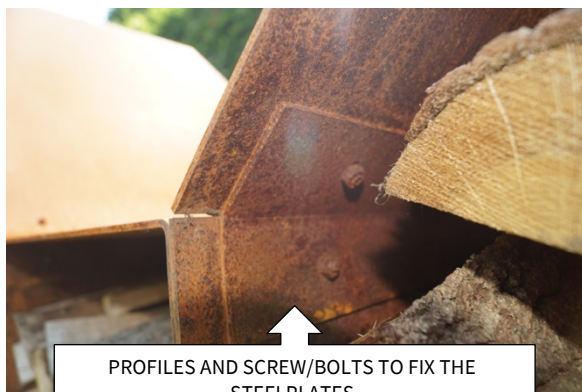
EASY ASSEMBLY WITH SLEEVES AND STRIPS



3MM CORTEN STEEL



NATURAL BROWN COLOR



PROFILES AND SCREW/BOLTS TO FIX THE STEELPLATES



5 CM HIGH STRIPS ON THE BOTTOM TO KEEP THE FIREWOOD DRY

### Technical information

Material	- 3mm CorTen steel
Base	- 3 modules + intersection piece
Volume	- 3.5 cubes wood
Dimensions	- 380 x 74 x 186 cm (lxwxh)

### Packaging

Dimensions	- 120 x 80 x 35 cm (lxwxh)
Weight	- +/- 200kg

### Links

Website product page

<https://www.rb73.nl/en/houtopslag-bruges-en/>

You tube

<https://www.youtube.com/watch?v=jL-PcbqXt4>

